



**EVIAR  
EGYPT  
2023**



**KNOWLEDGE  
PUT TO USE**

**FIRST EGYPTIAN BUILT  
CNC MILLING MACHINE**

# WHY CHOOSE EMAR

EMAR makes a lot of machines, and it does a fine job at designing and building the machine that's right for you. Each and every machine is built in a single factory in 10<sup>th</sup> of Ramadan City in Egypt, allowing the building process to be constantly monitored by engineers on the production floor. Doing so, makes it possible to constantly change, enhance and monitor quality live on the assembly line, ensuring that each and every machine carrying EMAR's logo is up to date and defect-free.

## How EMAR builds machines?

Basically the building process is **EMAR machines making more EMAR machines**. Every critical part is machined in EMAR's factory using EMAR's machines. And when it comes to components used, EMAR does not compromise quality, from liner guides to ball screws to spindle bearing to servos & stepper motors to drivers, EMAR only uses the highest quality in the price range. Further, EMAR's assembly procedures follows a strict protocol, with quality checks made continuously throughout the process, starting from geometry and spindle checks to leak tests and sampling (test cuts).

## EMAR takes pride in the machines it builds and its customers are there to back it up



# KNOW WHAT YOU ARE PAYING FOR

An Egyptian machine, that is un-matched by Chinese rivals and goes neck to neck with the Taiwanese ones. With a maintenance team present in Egypt 24/7, managed directly by the manufacturer, your support will be in Arabic language, without having to worry about long e-mails lists and different weekend/holidays hustles. Your maintenance services, spare parts installations and machine upgrades will be finished long before other overseas manufacturers even reply to your e-mail request.

Following the need of the market, EMAR machines are flexible, reliable, precise, and off course unmatched when it comes to initial cost for its customers. All along with the outstanding performance, the simple design, and MACH3 & GSK controls, EMAR machines are perfect for almost all application areas and a wide range of industries, as its machines are capable of milling and engraving the toughest of metals.

EMAR machines are manufactured on demand, which means that you only pay for the options you want. You have the choices to customize your machine exactly the way you want. All along with 12 months guarantee and life time support.

## **All that with only a fraction of the price EMAR simply offers you maximum return on investment**





# EMAR SERVICE

## 12 MONTHS WARRANTY

## LIFE TIME SUPPORT

### Pre-sales services

- Customizable solutions to suit each and every industry.
- Machine choice guidance and assistance for different needs and requirements.
- Arabic & English sales services.
- Live machine demonstrations.
- Investigations and test sampling availability.
- Customers list referrals.

### After-Sales Services

- One year warranty & life time support.
- Modular interchangeable spare parts.
- Customized mechanical upgrades.
- Arabic/English 24/7 on-call maintenance services.
- Technical milling solutions & support.
- CAD & CAM support.
- Basic control and software training.
- On-site maintenance & regular check-ups.



# EMAR M-SERIES

## VERTICAL MILLING MACHINES



# SOFT-METALS

## M-SERIES MILLING MACHINES

Model	ECNC 5030 M
	Table Size
	550 x 350 mm
	Axis Travel (X.Y.Z)
	500 x 300 x 160 mm
	Max. Table load
	100 kg
	Spindle Type
	ER 20 Collet System
	Spindle RPM / Power
	24,000 / 3.2 k.W
	Positioning Accuracy
	± 0.015 mm
	Rapid Feed Rate
	4,000 mm/min
	Control Type
	Computer Based (Mach-3)
	Chassis
	Steel built-up section
	Weight
	≈ 500 kg
	Floor Space
	1,800 x 1,000 x 1,800 mm

Model	ECNC 6040 M
	Table Size
	650 x 450 mm
	Axis Travel (X.Y.Z)
	600 x 400 x 170 mm
	Max. Table load
	100 kg
	Spindle Type
	ER 20 Collet System
	Spindle RPM / Power
	24,000 / 4.0 k.W
	Positioning Accuracy
	± 0.015 mm
	Rapid Feed Rate
	4,000 mm/min
	Control Type
	Computer Based (Mach-3)
	Chassis
	Steel built-up section
	Weight
	≈ 750 kg
	Floor Space
	2,000 x 1,400 x 2,000 mm

Model	ECNC 8040 M
	Table Size
	850 x 450 mm
	Axis Travel (X.Y.Z)
	800 x 400 x 170 mm
	Max. Table load
	100 kg
	Spindle Type
	ER 20 Collet System
	Spindle RPM / Power
	24,000 / 4.0 k.W
	Positioning Accuracy
	± 0.015 mm
	Rapid Feed Rate
	4,000 mm/min
	Control Type
	Computer Based (Mach-3)
	Chassis
	Steel built-up section
	Weight
	≈ 900 kg
	Floor Space
	2,200 x 1,400 x 2,000 mm

# EMAR CM-SERIES

## VERTICAL MILLING MACHINES



# ALL-METALS

## CM-SERIES MILLING MACHINES

### Model

### ECNC 5030 CM

Table Size	740 x 350 mm / T-Slot
Axis Travel (X.Y.Z)	500 x 300 x 150 mm
Max. Table load	200 kg
Spindle Type	ER 20 Collet System
Spindle RPM / Power	24,000 / 4.2 k.W
Positioning Accuracy	± 0.015 mm
Rapid Feed Rate	4,000 mm/min
Control Type	Computer Based (Mach-3)
Body	Cast iron
Weight	≈ 1,000 kg
Floor Space	2,500 x 1,400 x 2,000 mm



### Model

### ECNC 6040 CM ATC BT40

Table Size	1,150 x 410 mm / T-Slot
Axis Travel (X.Y.Z)	600 x 400 x 400 mm
Max. Table load	250 kg
Spindle Type	BT 40
Spindle RPM / Power	12,000 / 7.5 k.W
Positioning Accuracy	± 0.015 mm
Rapid Feed Rate	6,000 mm/min
Control Type	Computer Based (Mach-3)
Body	Cast Iron
Weight	≈ 3,500 kg
Tool Changer	12 tools Automatic



### Model

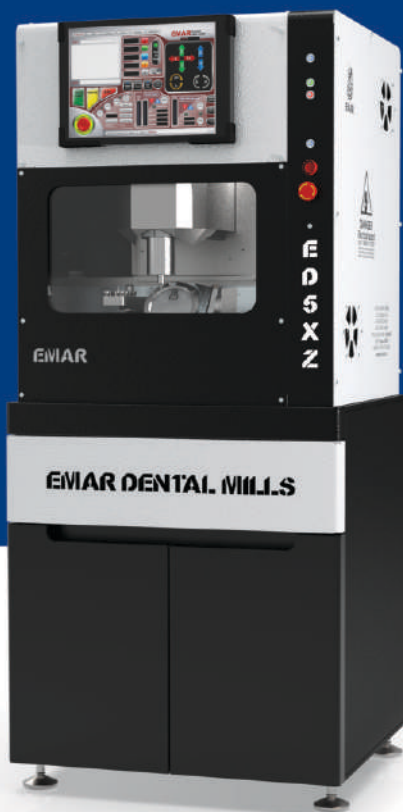
### ECNC 8040 CM ATC BT40

Table Size	1,200 x 550 mm / T-Slot
Axis Travel (X.Y.Z)	800 x 400 x 450 mm
Max. Table load	300 kg
Spindle Type	BT 40
Spindle RPM / Power	12,000 / 7.5 k.W
Positioning Accuracy	± 0.015 mm
Rapid Feed Rate	6,000 mm/min
Control Type	Computer Based (Mach-3)
Body	Cast Iron
Weight	≈ 4,000 kg
Tool Changer	12 tools Automatic



# EMAR DENTAL SERIES

## DENTAL MILLING MACHINES



# DENTAL MILLS

## WET/DRY MACHINING

### Model

### ED5X

Clamping System	Standard Clamping 98 mm
Number of Axis	5 Axis up to $\pm 30$
Spindle RPM / Power	60,000 RPM / 2,500 Watt
Weight	$\approx 450$ kg
Spindle Type	ATC Water Cooled
Number of Tools	16 Tools Magazine
Motors and Drivers Type	AC Servo Motor System
Positioning Accuracy	$\pm 0.005$ mm
Rapid Feed Rate	4,000 mm/min
Chassis	Hybrid Cast Iron Aluminum
Floor Space	800 x 1,000 x 2,000 mm
Material change	Manual single blank holder
Suitable for	Dry machining / Wet processing
Machinable materials	Titanium, Chromium-cobalt,

Pmma, Peek, Plastics, Composites, Wax, Ceramic hybrid,  
Zirconia, Glass Ceramic, Sintered metal.



### Model

### ED5Xz

Clamping System	Standard Clamping 98 mm
Number of Axis	5 Axis up to $\pm 30$
Spindle RPM / Power	60,000 RPM / 1,800 Watt
Weight	$\approx 250$ kg
Spindle Type	ATC Water Cooled
Number of Tools	11 Tools Magazine
Motors and Drivers Type	Stepper Motor System
Positioning Accuracy	$\pm 0.01$ mm
Rapid Feed Rate	4,000 mm/min
Chassis	Aluminum Built-up Section
Floor Space	750 x 650 x 1,800 mm
Material change	Manual single blank holder
Suitable for	Dry machining / Wet processing
Machinable materials	Zirconia, Pmma, Peek, Wax,

Glass Ceramic, Ceramic hybrid,  
Plastics, Composites.



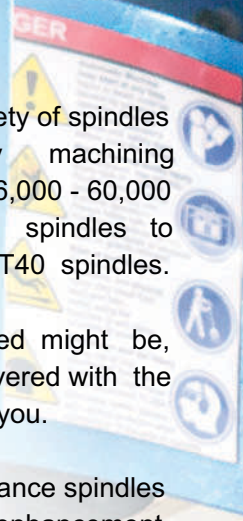
# EMAR SPINDLES



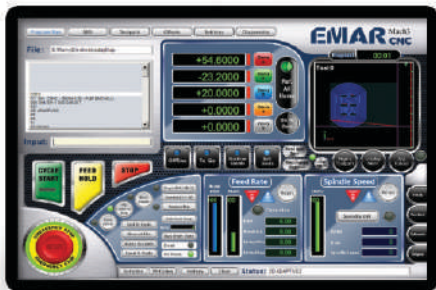
EMAR offers a variety of spindles that suit every machining requirements, from 6,000 - 60,000 RPM ER - Collet spindles to powerful 7.5 KW BT40 spindles.

Whatever your need might be, EMAR got you covered with the right spindle for you.

EMAR high performance spindles provide immediate enhancement in performance, machining time, surface finish and tool life, all along with various power and torque options which offer an ideal solution for a wide range of semi - finishing and finishing machining applications, such as milling, drilling, thread milling, engraving, chamfering / deburring.







## EMAR SPECIAL MACH 3 INTERFACE

- User friendly interface.
- Active touch screen.
- Full functional keyboard.
- Up to 5 Axis simultaneous control.
- Short cut buttons provide ease-of-use.
- Axis speed adjustment during operation.
- Optional arabic interface.



## **GSK** **LATEST ADVANCED CNC CONTROLLERS**

- User friendly / easy-to-use interface.
- Resistant to harsh usage & all environmental effects like shocks, vibrations, dirt, moisture, humidity, high temperatures, being in electromagnetic zone.
- Powerful functions, simple operation and high-performance CNC system.
- Flawless 5-axis simultaneous control.
- High speed and high precision industrial Ethernet bus and servo real-time communication

# OPTIONAL ACCESSORIES

## MIST/FLOOD COOLING



## T-SLOT BED



## SERVO/EASY SERVO MOTORS



## TOUCH SCREEN



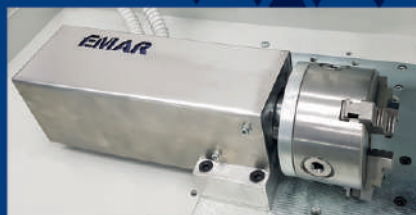
## TOUCH PROBE



## VACUUM TABLE



## 4th AXLE





**AR**

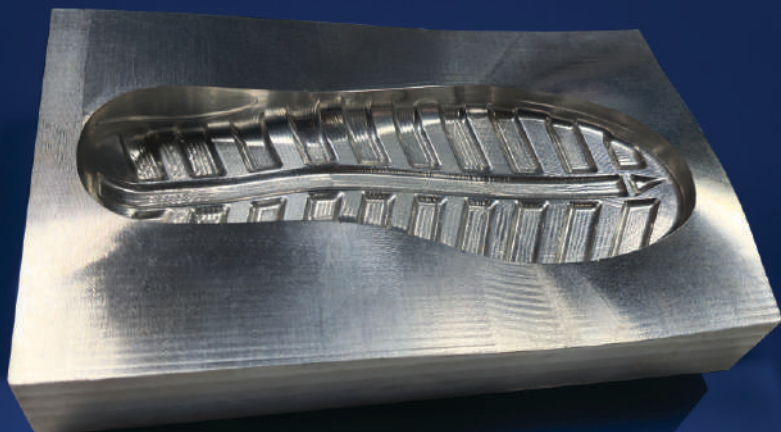
# **5-AXIS ROTARIES**

**Powerful 5-Axis  
for 3-Axis Mills**

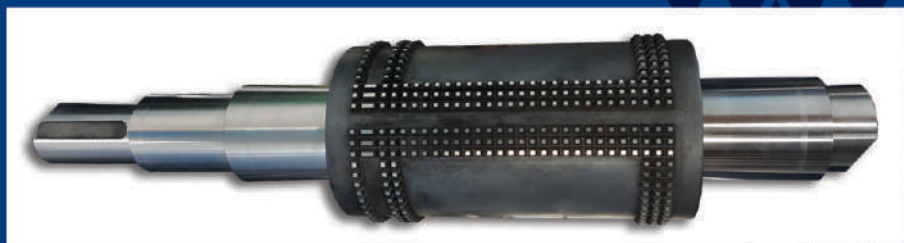
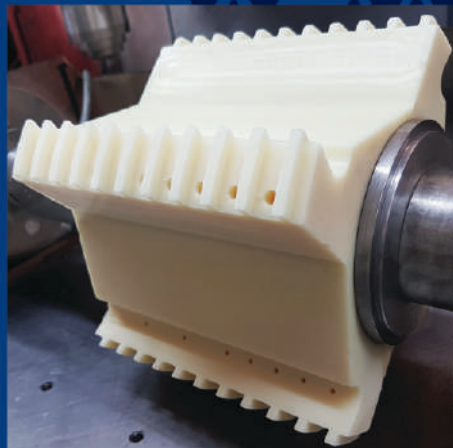


**EMAR**  
**E-1R1200**

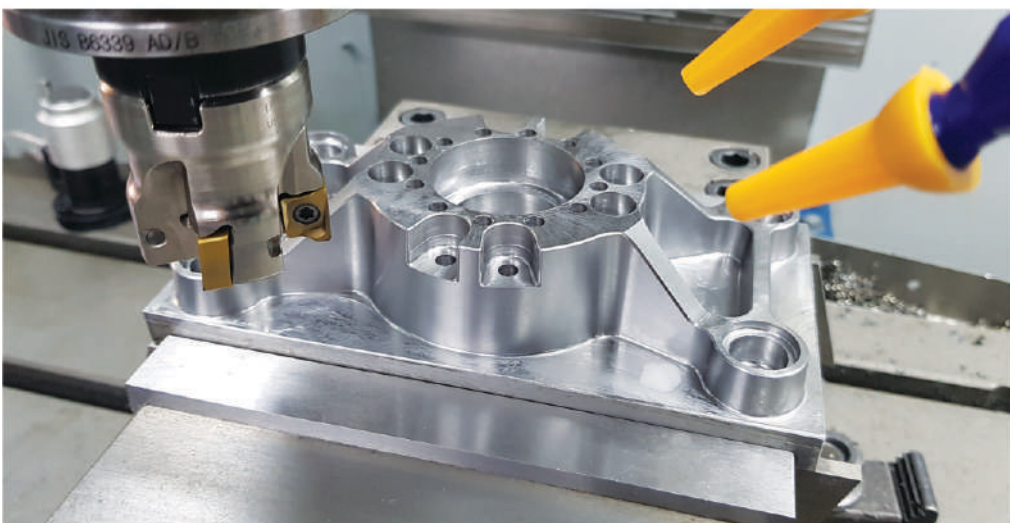
# SAMPLES ALUMINUM

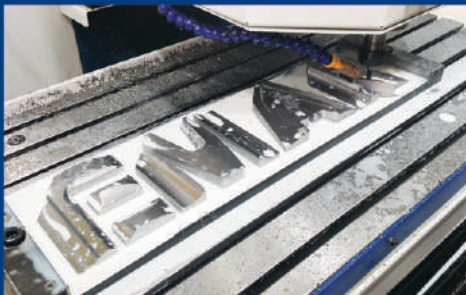
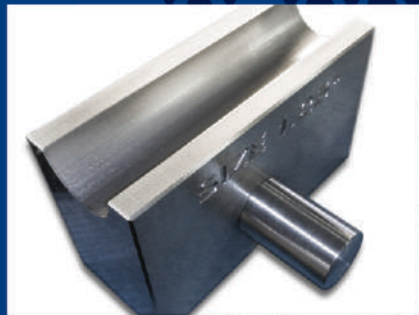


# 4th AXIS ROTARY

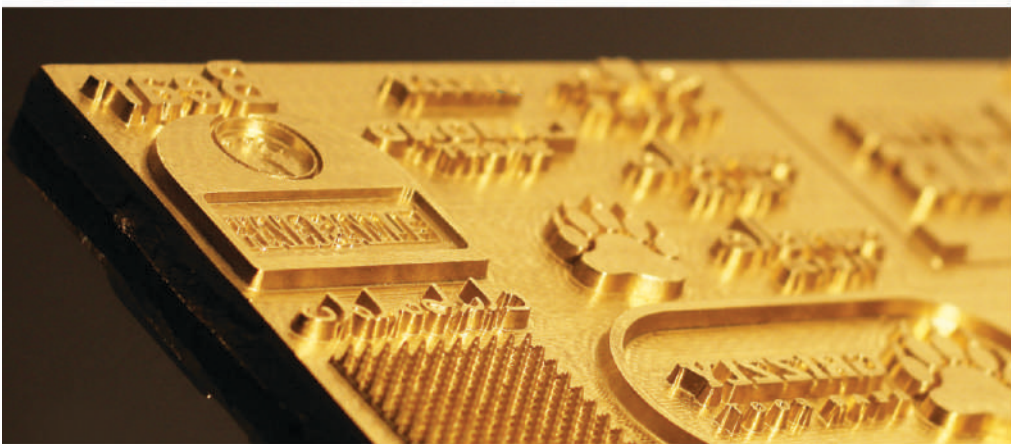


# STEEL





# BRASS GRAPHITE



# DENTAL TITANIUM ZIRCONIUM





**EMAR**



**C2, Industrial Complex,  
10th of Ramadan city, Asharquia, Egypt**



**+2 0101 16 15 522**

**+2 0100 37 12 976**

**+2 0100 88 66 472**



**info@emar-eg.com**



**www.emar-eg.com**



**www.fb.com/EMAR4IS**